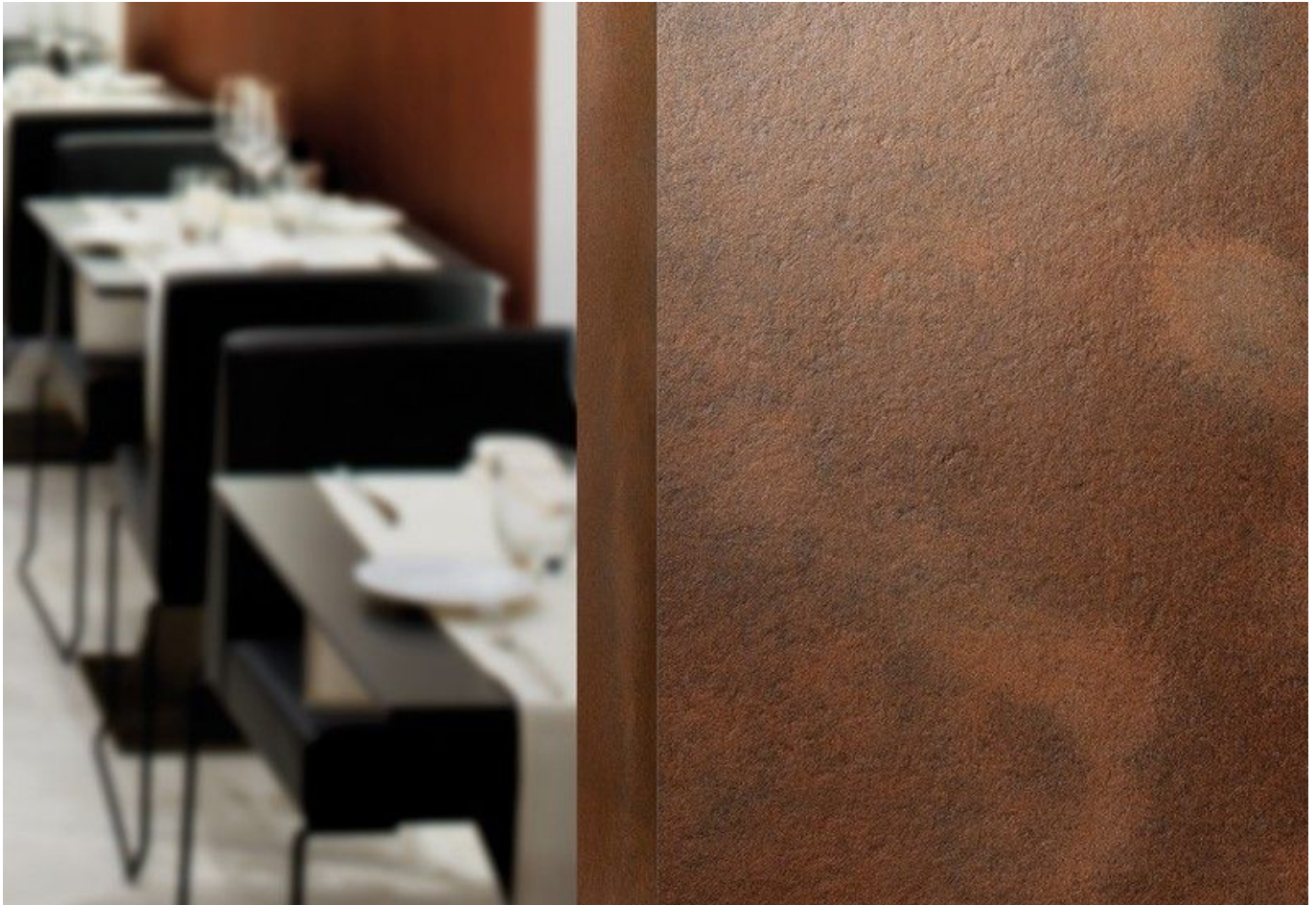


Coated sheets

Coated sheets can be obtained with patterns and surfaces conforming to the different collections of Formica.



A coated sheet is hygienic and durable

Standard bases

- Chipboard sheet P2 / P5 - size 3050 x 1290
 - Standard thicknesses 12, 15, 16, 18, 22, 25, 28, 38 mm
- Plywood
- MDF

Ask our Customer Service about other base options

+358 14 774 0111 or tilauskasittely@tallioy.com

Related PDF

-  [Formica Collection Directory, English - 4,898.28 KB](#)